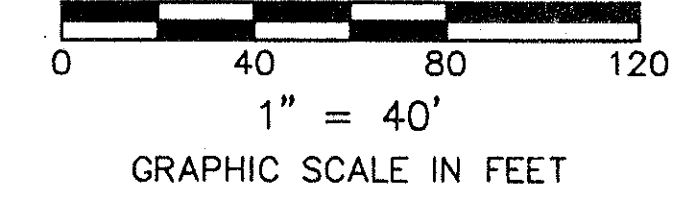
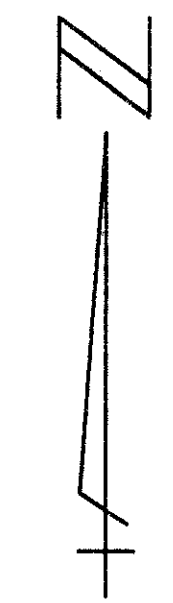


STATE OF FLORIDA
COUNTY OF PALM BEACH

THIS PLAT WAS FILED FOR
RECORD _____ DAY OF _____
THIS _____ AD, 1996 AND DULY RECORDED
IN PLAT BOOK _____ ON PAGES
_____ AND _____

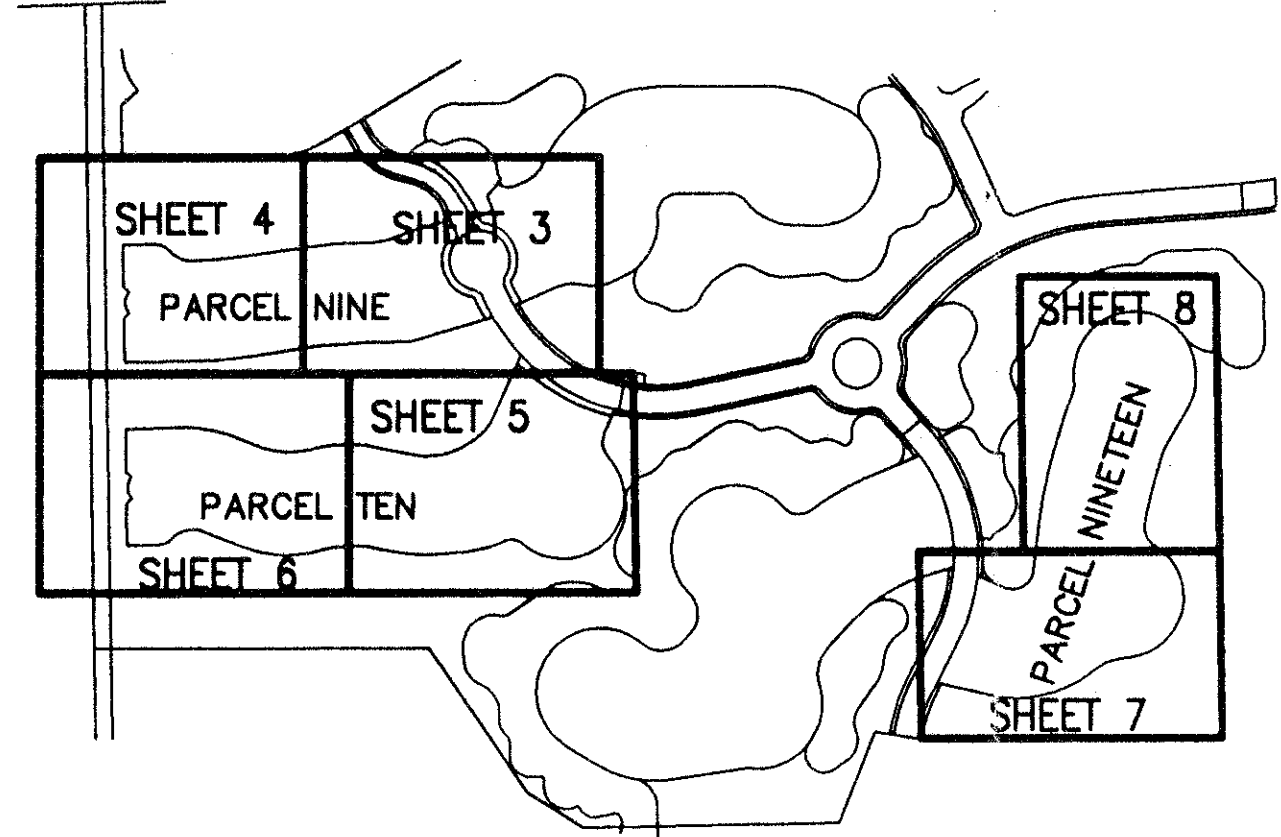
DOROTHY H. WILKEN, CLERK
BY: _____, D.C.

CIRCUIT COURT SEAL



ADDISON RESERVE PARCELS NINE, TEN & NINETEEN

PART OF GLENEAGLES/POLO CLUB WEST P.U.D.
BEING A REPLAT OF TRACT 9, TRACT 10 AND TRACT 19,
"ADDISON RESERVE PLAT THREE"
(P.B. 78, PGS. 5 - 12)
SITUATE IN SECTION 28, TOWNSHIP 46 SOUTH, RANGE 42 EAST
PALM BEACH COUNTY, FLORIDA
AUGUST, 1996 SHEET 4 OF 8



SHEET LOCATION MAP
NOT TO SCALE



*PET. 80-215
* AUC. #0002 - PAR. 9+10
AUC. #0001 - PAR. 19
5/3/96/K*

- LEGEND**
- A.M.E. ACCESS AND MAINTENANCE EASEMENT
 - B.E. BUFFER EASEMENT
 - Δ CENTRAL (DELTA) ANGLE
 - D.E. DRAINAGE EASEMENT
 - FPL FLORIDA POWER & LIGHT
 - L ARC LENGTH
 - L.A.E. LIMITED ACCESS EASEMENT
 - L.E. LANDSCAPE EASEMENT
 - L.M.E. LAKE MAINTENANCE EASEMENT
 - L.M.A.E. LAKE MAINTENANCE ACCESS EASEMENT
 - L.W.D.D. LAKE WORTH DRAINAGE DISTRICT
 - (NR) NON-RADIAL
 - O.R.B. OFFICIAL RECORD BOOK
 - P.B. PLAT BOOK
 - PG(S) PAGE(S)
 - RADIUS
 - U.E. UTILITY EASEMENT
 - PERMANENT REFERENCE MONUMENT FOUND PLS# 4763
 - PERMANENT REFERENCE MONUMENT SET PLS# 4763
 - PERMANENT CONTROL POINT SET PLS# 4763
 - CENTER LINE

*Subdivision Addison Reserve
Book 78 Page 140
Flood Zone B Flood Map #215A
Quads #02 Zoning RT5
Pet 80-215 ZIP Code 33406
PUD Name Addison Reserve*

Parcel 9

78/140

THIS INSTRUMENT WAS PREPARED BY MARY HANNA CLODFELTER, P.L.S., IN THE OFFICES OF MOCK, ROOS & ASSOCIATES, INC., 5720 CORPORATE WAY, WEST PALM BEACH, FLORIDA 33407.

SCALE:
1" = 40'
P.A. NO.:
94182.09
DATE:
AUGUST 1996
DRAWING NO.
46-42-28-105



**ADDISON RESERVE
PARCELS NINE, TEN & NINETEEN**
PART OF GLENEAGLES/POLO CLUB WEST P.U.D.
BEING A REPLAT OF TRACT 9, TRACT 10 AND TRACT 19,
"ADDISON RESERVE PLAT THREE"
(P.B. 78, PGS. 5 - 12)
SITUATE IN SECTION 28, TOWNSHIP 46 SOUTH, RANGE 42 EAST
PALM BEACH COUNTY, FLORIDA

0230-022